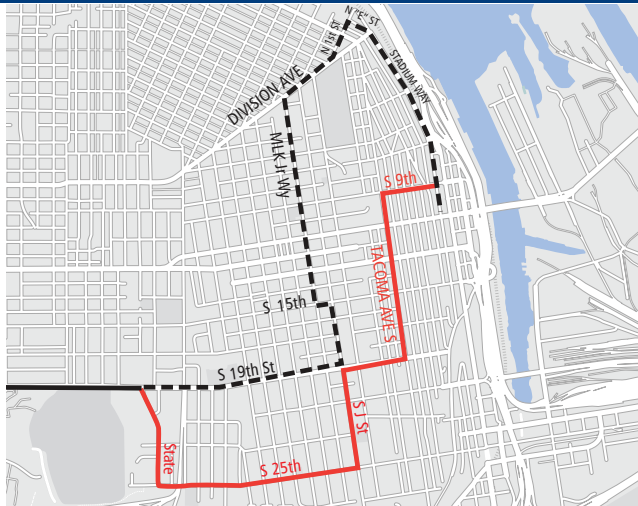


Route 48 – Sheridan–M St



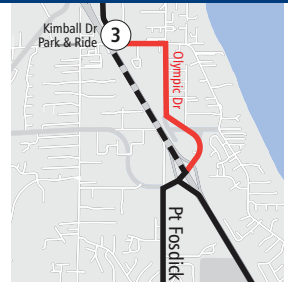
No service on S 13th St between Commerce and Yakima Ave; nor on Commerce.

Route 57 – Union–S 19th St–Hilltop



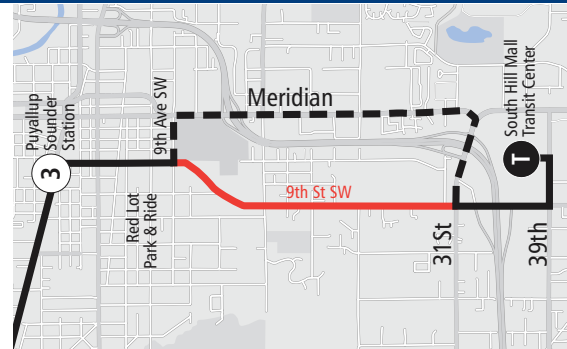
No service on portions of S 9th St, Tacoma Ave S, S 19th St between Tacoma Ave S and S J St, S 25th St and State St.

Route 100 – Gig Harbor



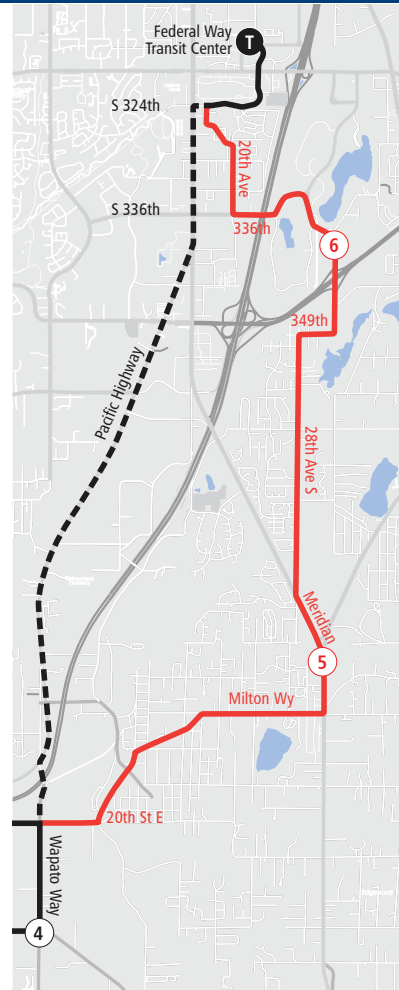
No service on Soundview, Olympic Dr, or Hunt (a snow circulator will operate between Kimball Drive Park & Ride and Purdy).

Route 400 – Puyallup–Downtown Tacoma



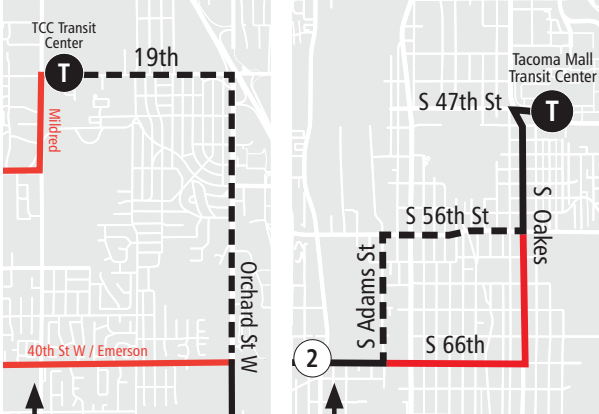
Route 400 in Puyallup: No service on 9th St SW between 9th Ave SW and 31st St.

Route 501 – Milton–Federal Way



Snow route will serve 70th Ave at 20th St East, and travel north on Pacific Hwy to Federal Way Transit Center.

Route 53 – University Place and Tacoma Mall TC



No service along Mildred, 27th St W, Grandview, 40th St W and Emerson.

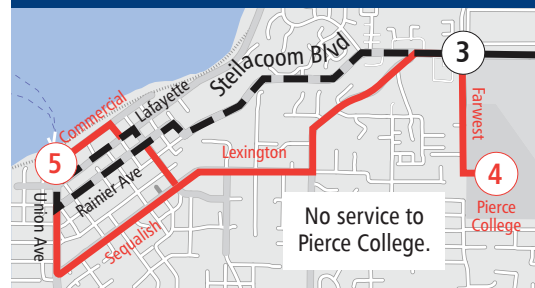
No service on portions of S Oakes and S 66th St.

Route 63 – NE Tacoma Express (Northeast Tacoma)



No service west of 49th Ave NE and 340th.

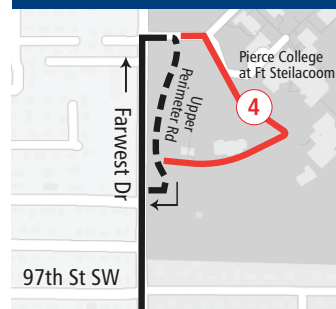
Route 212 – Steilacoom



No service to Pierce College.

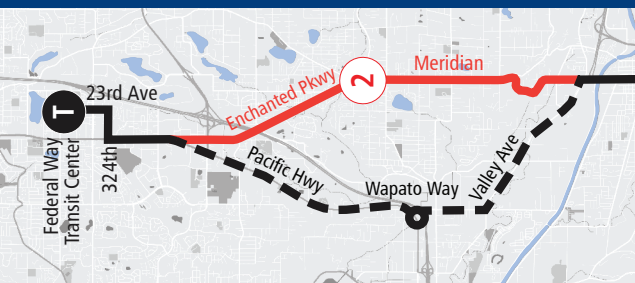
Buses travel on Steilacoom Blvd to and from Steilacoom. No service on Rigney Rd, Roe, Lexington, Main, Commercial, Union or Sequash.

Route 214 – Washington



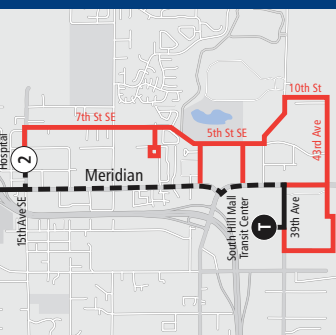
On Pierce College campus, no service at bus stop by Cascade Bldg. Bus will travel on Upper Perimeter Road and will not continue into Steilacoom.

Route 402 – Meridian



No service between the intersection of Valley Ave & Meridian and the intersection of Pacific Hwy and Enchanted Parkway.

Route 425 – Puyallup Connector



Route 425 remains on Meridian Ave, except to serve Good Samaritan Hospital.

No service on 7th St SE or 43rd Ave.

No service on 5th St SE, 27th Ave SE, or 31st Ave SE.

MAP KEY

- Regular Route
- Snow Route
- No Service

Snow Guide

WINTER 2023-2024

When we experience snow or other extreme weather conditions, Pierce Transit has a plan to get you safely where you need to go.

Look inside for maps showing where your bus travels while a snow detour is in effect.



Need to get around Gig Harbor in the snow?

Try our Snow Circulator!

When the roads are too slick for buses to safely travel to and from Kimball Drive Park & Ride and Purdy Park & Ride, we will place Route 100 on snow detour. A chained vehicle will be used to assist the regular bus with this route.

The regular bus will operate a modified route between TCC and Kimball Drive Park & Ride.

The chained van will operate regular route between Kimball Drive Park & Ride and Purdy Park & Ride.

- Tips for riding the bus in snow and ice:**
- If snow is on the ground, visit PierceTransit.org
 - Signal so the driver has plenty of time to stop
 - Use handrails when getting on and off the bus

Every attempt will be made to continue wheelchair-accessible service, however sand, salt and cold weather can interfere with the circulator's lift mechanism.

Stay informed:

- Visit PierceTransit.org and look for an alert and detour map on your route page
- Sign up for route alerts and news at PierceTransit.org/StayConnected
- Call **Customer Service:** 253.581.8000, option 2; 800.562.8109; or TTY Relay: 711
- Call to **confirm Pierce Transit's Runner service:**
 - 253.377.4380 for JBLM
 - 253.581.8000 for Ruston, Tideflats, Spanaway and Puyallup

Route 1 – 6th Ave–Pacific Ave



No service between the intersection of S 6th Ave and MLK JR Way and the intersection of 9th St and Stadium Way.

Route 2 – S 19th St–Bridgeport



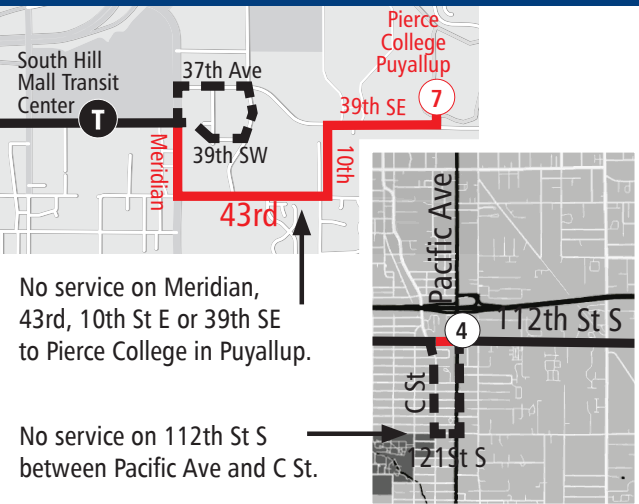
No service between the intersection of S 19th St and MLK JR Way and Commerce.

Route 3 – Lakewood–Tacoma



No service between Market St and S 19th St. Route follows S Jefferson Ave.

Route 4 – Lakewood–South Hill



No service on Meridian, 43rd, 10th St E or 39th SE to Pierce College in Puyallup.

No service on 112th St S between Pacific Ave and C St.

Route 10 – Pearl St



No service on N 26th St, Vassault or Highlands.

Route 11 – Point Defiance



No service on Commerce, S 9th St, Market St, or St Helens Ave.

Route 13 – N 30th St



No service on D St, Dock St, S 9th St, Market St, St Helens, Tacoma Ave, N McCarver, N 30th, or on N Proctor between N 26th and N 30th.

Route 16 – North End



No service on Commerce, S 9th St, Market St, or St Helens Ave.

Route 28 – S 12th St



No service on S 11th St, S 13th St, an A St.

Route 41 – S 56th St–Salishan (East Tacoma)



No service on Roosevelt Ave, E 32nd St, E 44th St, or E 56th St between Portland Ave and McKinley Ave.

Route 45 – Yakima



No service on S 9th St between Commerce and Yakima.

MAP KEY

- Regular Route (solid black line)
- Snow Route (dashed black line)
- No Service (red line)